

GPE LLC, Dubai, United Arab Emirates

The highest standards for the highest building

The most challenging requirements which the concrete for the Burj Arab had to meet were that the recipes had to be fine-tuned to the minutest detail, the weighing accuracy had to be as high as possible and the quality had to be absolutely consistent. At a height of more than 700 m, this will be the highest building in the world and therefore another milestone in the unprecedented

construction boom which is taking place in the Emirate of Dubai. The contract for supplying the concrete was awarded to Unimix, which is one of the largest ready-mix suppliers in the UAE. Two extra ready-mix concrete plants each with an output of 120 m³ were set up near the construction site.



At a height of more than 700 m, the Burj Arab will be the highest building in the world and another milestone in the unprecedented construction boom which is taking place in the Emirate of Dubai

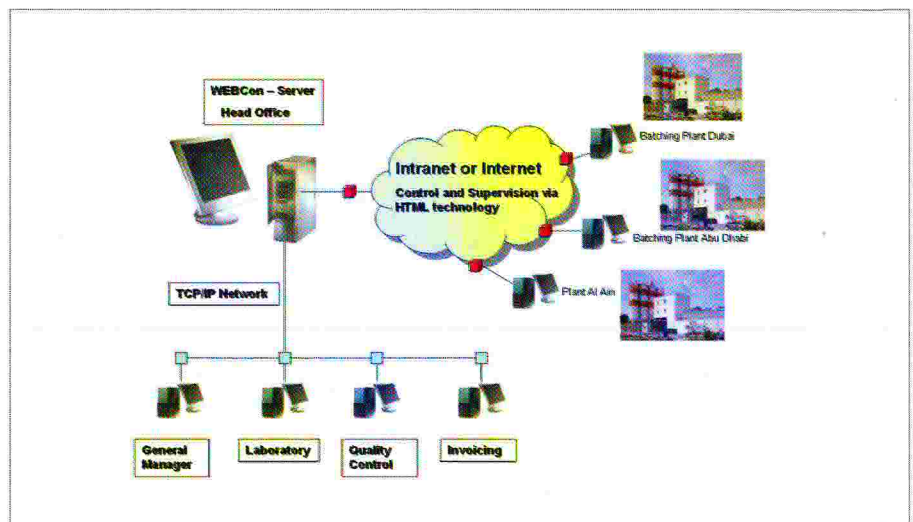
Since the existing weighing and batching controller was not able to meet the requirements of the client, German Plant Experience was asked to replace it as quickly as possible. The controller was dismantled, the entire wiring modified and the Webcon System installed in just four days. Production started again on the fifth day.

Webcon is meeting all the construction requirements of the Burj Dubai project. Intelligent weighing terminals guarantee maximum batching accuracy of all components including microsilica and ice. A PLC from Siemens is available for the process sequence. Both the weighing terminals and the PLC communicate with the host computer via an OPC server on which the actual batching software is running. All the hardware is created from standard, readily available components. Using the latest web technology with standard software components ensures maximum flexibility and user friendliness

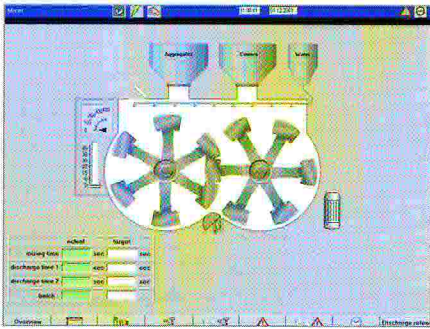
for the operator. Clearly laid-out menus and self-explanatory buttons enable the operator to work with maximum operating convenience with an excellent overall view of the system. The host computer is connected to two TFT monitors so the operator can select recipes easily, enter

jobs or set plant parameters with the entire process displayed on the other monitor. Plant visualisation consists of an overview page from which the operator can zoom in to the individual plant areas by mouse click in order to find out more details. Convenient, user-friendly masks allow him to enter recipes, clients, vehicles, construction sites or jobs and freely adjustable plant parameters enable the plant to be fine-tuned for maximum productivity.

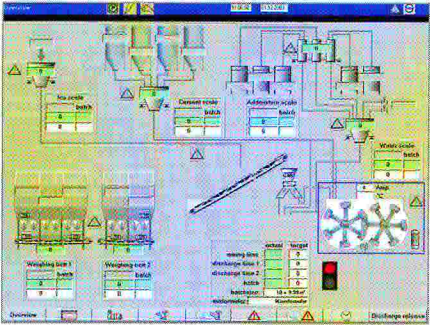
All data are saved on an SQL database, which allows the client to move all the relevant production data into a parent or external system by the simplest means. Alternatively, all the necessary data can be collected on Webcon, by interrogating the database directly, and then transferred to Excel for further processing. Webcon runs on a standard internet browser and is therefore easily integrated



Latest web technology allows easy connection to network environments



Detail of mixer visualisation



Complete plant visualisation at a glance

into an existing network. The comprehensive statistics allow the client to look at consumptions, levels and other production parameters quickly and easily. All the statistics can be output within a timeframe of the operator's choice. Consumption statistics with management of material flows and setpoint/actual comparison with differential calculation are available as are client, construction-site and vehicle statistics as well as the job statistics with an output of all the components contained in the recipe. A tailor-made alarm system on the plant informs the operator immediately of messages and alarms in plain text. These are saved in a separate file and can be viewed at any time later.

GPE LLC is now established as one of the leading suppliers of mixing plants, control systems and any components relating to mixing plants. The fact that the company can supply spare parts from stock and

offer advice from experienced technicians means that the client is guaranteed a comprehensive after-sales service and immediate assistance in an emergency.

Further information:



GPE LLC
P.O. Box 182234
Dubai, VAE
T +971 4 2242274
F +971 4 2242276
info@gpe-dubai.com
www.gpe-dubai.com

„ALWAYS PRESENT
 WHERE SOMETHING'S
 GOING ON!“

